

Historic Four Corners of Tallahassee

Four corners of history intersect at East Gaines Street and South Gadsden Street in downtown Tallahassee.

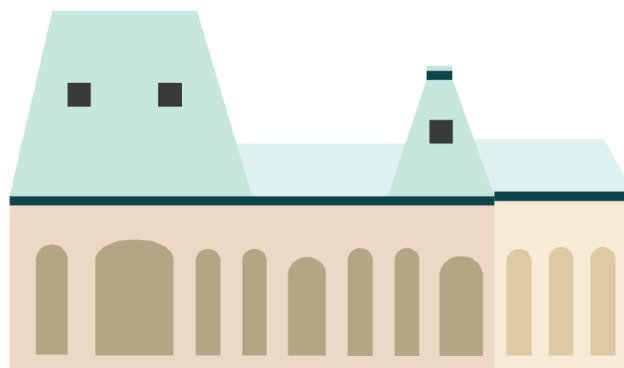
Caroline Brevard Grammar School

- Designed by noted architect William Augustus Edwards
- Added to the National Register of Historic Places in 1987
- Currently occupied by the Leon County School District

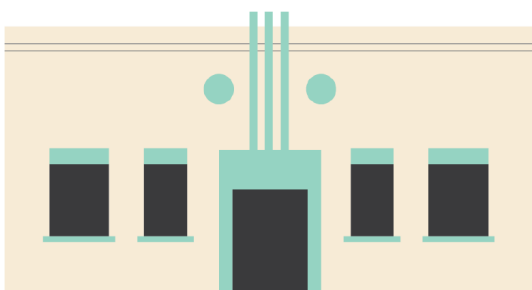


Old City Waterworks

- Constructed in 1904 as the city's first municipal water facility
- Added to the National Register of Historic Places in 1979
- The City of Tallahassee, the property's current owner, has issued an RFP with the requirement that the buyer maintain its historical designation



EAST GAINES ST.



Former Leon County Health Unit

- An Art Moderne architectural building built by the WPA in 1939
- First of its kind in the state, where interracial staff provided services for residents, including those living in the nearby Smokey Hollow neighborhood
- The building will be rehabilitated and incorporated within the NAP development while maintaining its historic character

SOUTH GADSDEN ST.



Future Civil Rights Memorial Plaza

- Currently the site of the former Leon County Jail, North American Properties will construct a public plaza to commemorate the events of the local Civil Rights Movement with input from area residents
- NAP formed a community historical user group to explore the stories behind these buildings and help cast a vision for how to best retell them in a future plaza
- Potential for rotating local history exhibits